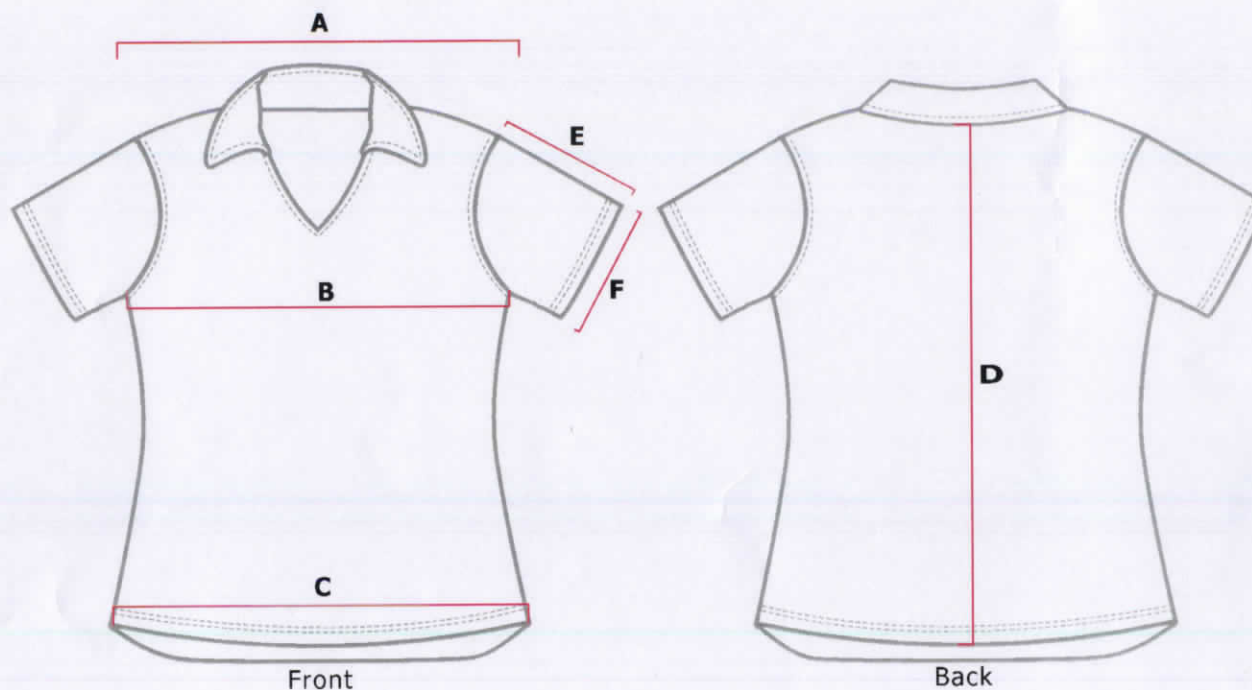


GARMENT SPECIFICATION

003 - Polo - Ladies - Adult



Front

Back

Measurements in cms

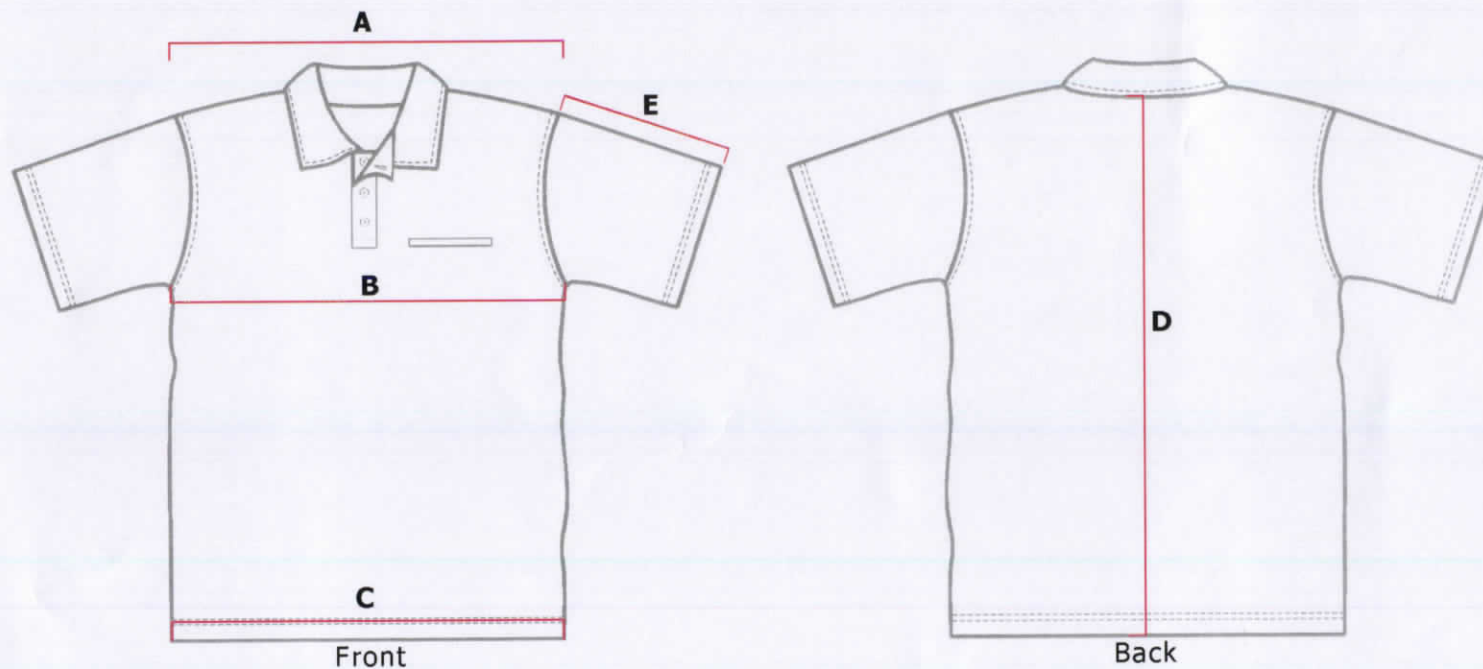
	SIZES								
	XS	S	M	L	XL	2XL	3XL	4XL	5XL
A. Shoulder	39	40	41	42	43	44	46	46	47
B. Chest	43	46	48	51	54	58	61	65	68
C. Hem	43	46	48	51	54	58	61	65	68
D. Centre back	59	61	65	66	68	71	73	76	78
E. Slv length	14	15	15	17	18	19	20	21	22
F. Slv open	14	14	15	15	15	16	17	17	18

Tolerance +/- 1.0 cm

GARMENT SPECIFICATION

052 (005) - Polo S/S - Unisex - Adult

Date - 16 July 2010



Measurement in cm

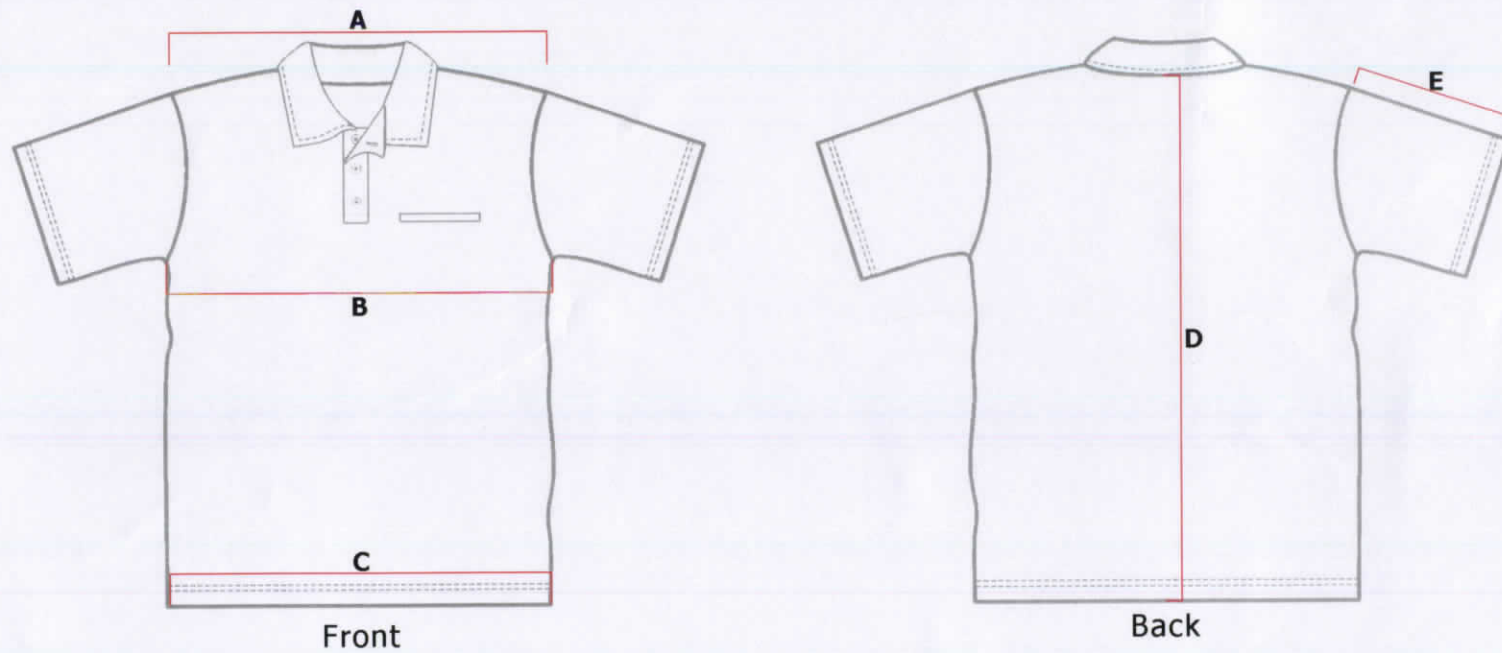
	SIZES								
	XS	S	M	L	XL	2XL	3XL	4XL	5XL
A. Shoulder	48	50	52	54	56	58	60	62	64
B. 1/2 Chest	51	53	56	58	61	65	69	73	77
C. Hem	50	52	55	57	60	64	68	72	76
D. Centre back	68	70	73	75	78	82	86	89	93
E. Slv Length	22	23	24	25	26	27	29	30	31

Tolerance +/- 1.0 cm

GARMENT SPECIFICATION

871 - Short Sleeve Polo - Unisex - Youth

Date - 04 October 2010



Measurements in cms

SIZES.							
	4	6	8	10	12	14	16
A. Shoulder	37	39	41	43	45	47	49
B. Chest half circumference	38	40	42	44	46	48	50
C. Hem half circumference	38	40	42	44	46	48	50
D. Centre back	51	54	56	59	61	63	65
E. Slv Length	14	15	16	17	18	19	20

Tolerance +/- 1.0 cm